

SEQ  
needs  
your input

# Reviewing the status of our natural assets in South East Queensland: Have your say!



We are asking your input as we conduct a review of the condition of natural assets across South East Queensland (SEQ).

Your opinion will feed into the broadscale analysis we are conducting, which will feed into the re-invigorated Natural Resource Management Plan (NRM Plan) and targets across the region.

Below you will see two maps. Please look at them and let us know if you think they are accurate and whether anything is missing.

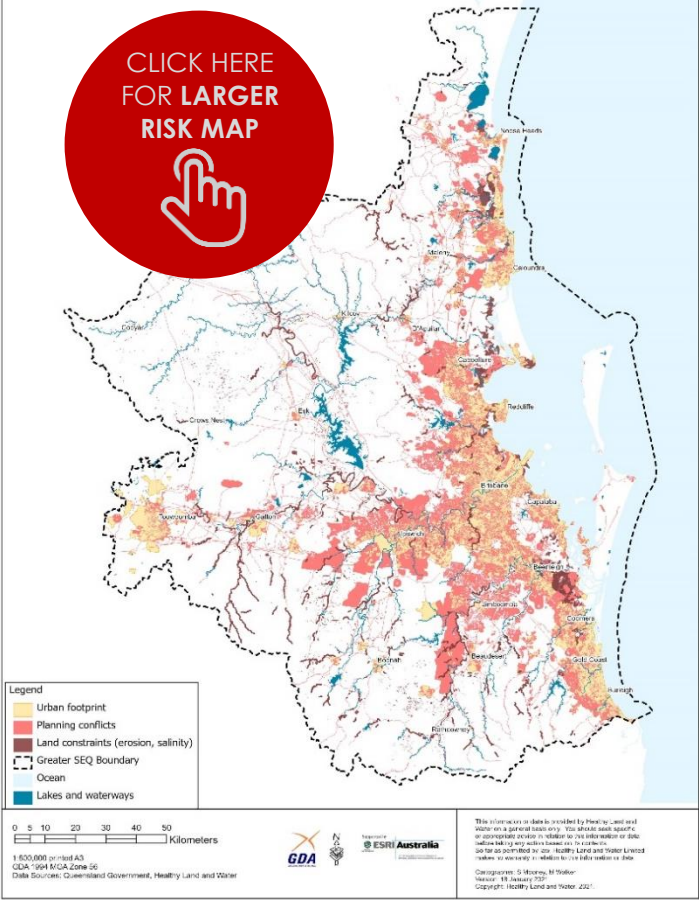
The first map represents the status of natural assets across the **Brisbane local government area**. The second is a high-level summary of threats across the SEQ region more broadly.

Please review these two maps for your area and have your say!

## Step 1: View natural assets map



## Step 2: View risks map



## Step 3: Give your feedback

Please provide your feedback

CLICK HERE TO GIVE YOUR FEEDBACK

Turn over for more information about why this is such an important project for building the resilience of our growing region.



## South East Queensland's NRM Plan: Focussing action to protect our natural assets

The NRM Plan for South East Queensland is the region's plan to **guide the protection and enhancement of our region's natural assets**.

The NRM Plan integrates and balances the array of competing economic, cultural, and environmental factors to guide collaborative strategies and actions which produce benefits for the whole community.

It has been carefully crafted and adapted over time by a broad collaboration of engaged stakeholders.

Healthy Land and Water is focused on ensuring the priorities are moving with and adapting to the changing environments and supporting communities in the best way possible.

Also under review the is **progress against the agreed set of regional targets** for SEQ which provides a unique monitoring and evaluation tool to **guide investment to increase the resilience and prosperity of the region**.

### Major review underway in 2021

South East Queensland commenced formulating the first iteration of the plan some 20 years ago, and like our environment and ecosystems, it has been adapted to our dynamic, changing environment ever since.

Every five years, Healthy Land and Water leads the review of the NRM Plan, identifying the latest and most accurate data and analysis methods. Progress against a set of targets is measured, with input from academic/research bodies, government, and community experts.

Change is compared to a baseline for each target, which was created in 2009 when the first plan was endorsed.

This review process is currently underway, with a view to releasing an updated plan for the region in late 2021.

### Somerset: a hub of biodiversity

Somerset is a biodiverse area with diverse array of native plants and wildlife, including rare habitats and species. Within the region there are 40 protected areas including national parks, state forests and forest reserves, as well as 11 nature reserves, which form a vital part of the region's environmental assets. The region also includes major water resources and recreational assets such as Lakes Wivenhoe and Somerset. Rural production is a vital industry within the region and 23% of Somerset is identified as good quality agricultural land.

Many initiatives are underway to halt or reverse the decline in natural asset condition. This report identifies some of the broad changes occurring in the Somerset region, and is intended to support and value-add to the information already available.

*Please turn over for target opportunities in the area.*

### South East Queensland's natural assets: Under pressure

The strong population growth forecasted for South East Queensland in the coming decades which will put **significant additional pressures** on our natural assets, many of which are **already under threat**.

Bushland, wetlands and farmland areas are all impacted by residential and industry expansion, resulting in impacts on fisheries, iconic species, biodiversity and open space.

Our natural assets underpin our quality of life and our economy. They provide important services such as air and water filtration, food production and beautiful places for living and recreation.

Whatever changes come our way will require a more resilient catchment to be able to deal with it.

Accordingly, we must plan and take concerted action to protect and enhance our region if we are going to retain our enviable reputation as a great place to live, work and visit.

### Local government vision for a prosperous SEQ

Somerset Futures 2010-2020 is the region's long term community plan. The local Council is committed to ensuring future growth and development protects and maintains:

- Our strong community values.
- Our rural production and lifestyle.
- Our towns and their distinct and unique regional identities.
- Our rich natural environmental assets.
- Our accessibility to other areas and regions.
- Our community led initiatives to build a resilient region.

## Target opportunities

The tourism industry relies heavily on the condition of our natural assets. Some of the major tourism drawcards in the Somerset area include:

- Its climate, weather and clean air.
- Wivenhoe and Somerset Dams.
- National and State forests (including D'Aguilar National Park, Ravensbourne National Park, Conondale National Park, Jimna State Forest and Benarkin State Forest).

Without the natural assets that supply these experiences, an \$8 billion reduction in turnover to the SEQ tourism industry could occur between now and 2031.<sup>1</sup>

The vision of the Somerset local government aligns well with the aspirations of the NRM Plan and its significance for the region's overall prosperity.

## We need your help to protect our natural assets now and into the future

An important part of the NRM Plan review is to collate an updated understanding of the status of natural assets in the area and risks across the region.

This is where you come in. If you haven't already done so, please review the maps on the front page of this flyer, then complete the short online survey we've put together to gather your feedback.

**We thank you for your input into this important project for South East Queensland.**

## Traditional Owner acknowledgement

We acknowledge that the place we now live in has been nurtured by Australia's First Peoples for tens of thousands of years. We believe the spiritual, cultural and physical consciousness gained through this custodianship is vital to maintaining the future of our region.

## Funding acknowledgement

*This project is supported by Healthy Land and Water, through funding from the Australian Government's National Landcare Program.*



### Disclaimer

The material contained in this publication is produced for general information only. It is not intended as professional advice on specific applications. It is the responsibility of the user to determine the suitability and appropriateness of the material contained in this publication to specific applications. No person should act or fail to act on the basis of any material contained in this publication without first obtaining specific independent professional advice. Healthy Land and Water and the participants of our network expressly disclaim any and all liability to any person in respect of anything done by any such person in reliance, whether in whole or in part, on this publication. The information contained in this publication does not necessarily represent the views of Healthy Land and Water or the participants of our network.

For further information about Healthy Land and Water, please email [info@hlw.org.au](mailto:info@hlw.org.au) or telephone (07) 3177 9100.

---

<sup>1</sup> Brisbane City Council's Natural Assets Local Law 2003 helps to protect the local environment including bushland areas, wetlands, waterway corridors and significant trees in urban areas. Council has been protecting vegetation and forests with local laws since 1991, providing a balance between protecting the city's environment and people, property and lifestyle.