

SEQ
needs
your input

Reviewing the status of our natural assets in South East Queensland: Have your say!

We are asking your input as we conduct a review of the condition of natural assets across South East Queensland (SEQ).

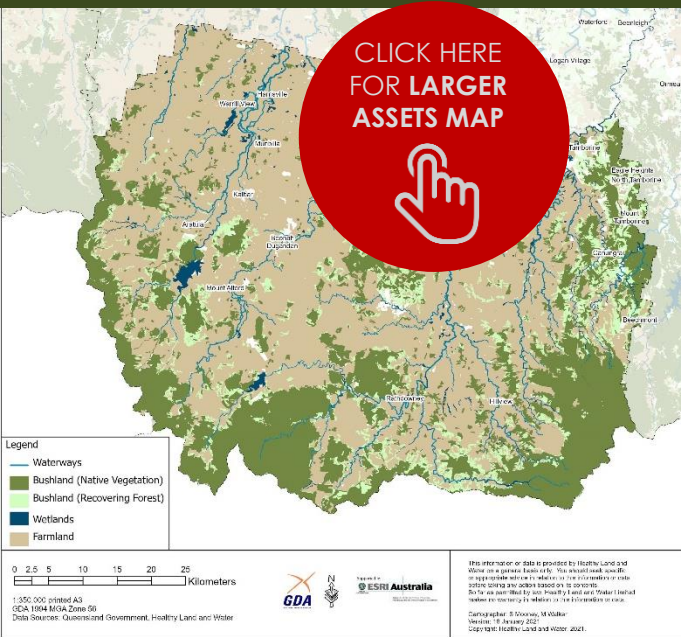
Your opinion will feed into the broadscale analysis we are conducting, which will feed into the re-invigorated Natural Resource Management Plan (NRM Plan) and targets across the region.

Below you will see two maps. Please look at them and let us know if you think they are accurate and whether anything is missing.

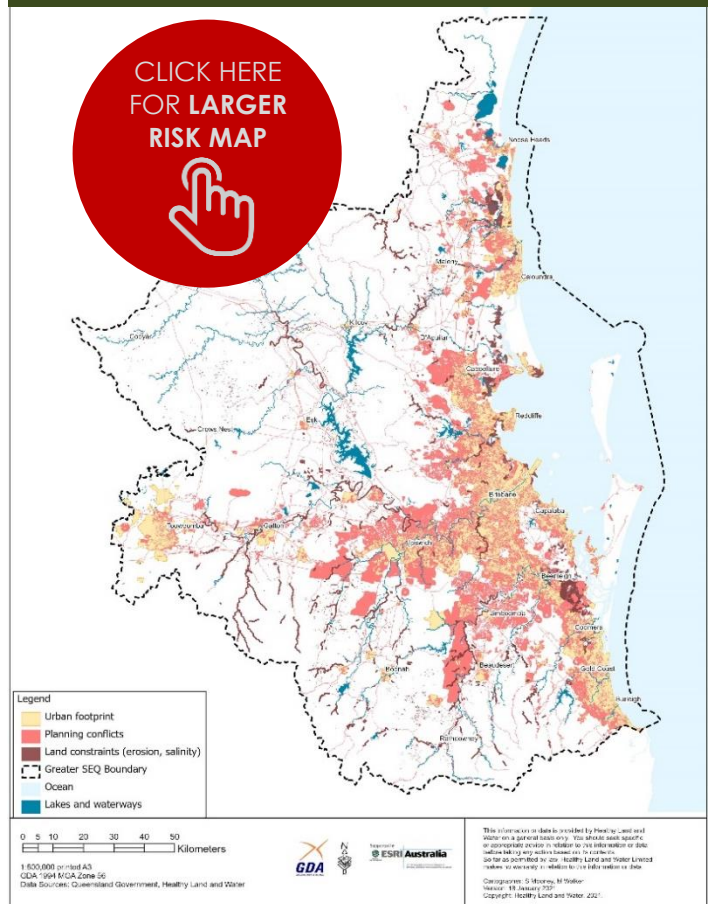
The first map represents the status of natural assets across the **Brisbane local government area**. The second is a high-level summary of threats across the SEQ region more broadly.

Please review these two maps for your area and have your say!

Step 1: View natural assets map



Step 2: View risks map



Step 3: Give your feedback

Please provide your feedback

CLICK HERE TO GIVE YOUR FEEDBACK

Turn over for more information about why this is such an important project for building the resilience of our growing region.



South East Queensland's NRM Plan: Focussing action to protect our natural assets

The NRM Plan for South East Queensland is the region's plan to **guide the protection and enhancement of our region's natural assets**.

The NRM Plan integrates and balances the array of competing economic, cultural, and environmental factors to guide collaborative strategies and actions which produce benefits for the whole community.

It has been carefully crafted and adapted over time by a broad collaboration of engaged stakeholders.

Healthy Land and Water is focused on ensuring the priorities are moving with and adapting to the changing environments and supporting communities in the best way possible.

Also under review the is **progress against the agreed set of regional targets** for SEQ which provides a unique monitoring and evaluation tool to **guide investment to increase the resilience and prosperity of the region**.

Major review underway in 2021

South East Queensland commenced formulating the first iteration of the plan some 20 years ago, and like our environment and ecosystems, it has been adapted to our dynamic, changing environment ever since.

Every five years, Healthy Land and Water leads the review of the NRM Plan, identifying the latest and most accurate data and analysis methods. Progress against a set of targets is measured, with input from academic/research bodies, government, and community experts.

Change is compared to a baseline for each target, which was created in 2009 when the first plan was endorsed.

This review process is currently underway, with a view to releasing an updated plan for the region in late 2021.

Scenic Rim: a hub of biodiversity

Scenic Rim is recognised for its biodiversity and contains World Heritage Listed Rainforest, one fifth of Queensland's plant species and more than 200 rare or threatened plants and animals. Scenic Rim covers 4,256 square kilometres, has approximately 50,000 hectares of national parks, parks and reserves, and is home to approximately 39,000 people. Agriculture, native forest and national parks are the dominant land uses.

Many initiatives are underway to halt or reverse the decline in natural asset condition. This report identifies some of the broad changes occurring in the Scenic Rim region, and is intended to support and value-add to the information already available.

Please turn over for target opportunities in the area

South East Queensland's natural assets: Under pressure

The strong population growth forecasted for South East Queensland in the coming decades which will put **significant additional pressures** on our natural assets, many of which are **already under threat**.

Bushland, wetlands and farmland areas are all impacted by residential and industry expansion, resulting in impacts on fisheries, iconic species, biodiversity and open space.

Our natural assets underpin our quality of life and our economy. They provide important services such as air and water filtration, food production and beautiful places for living and recreation.

Whatever changes come our way will require a more resilient catchment to be able to deal with it.

Accordingly, we must plan and take concerted action to protect and enhance our region if we are going to retain our enviable reputation as a great place to live, work and visit.

Local government vision for a prosperous SEQ

The Scenic Rim Community Plan 2011-26 expresses a shared vision for the region's future to guide action on issues including the environment, economic development, social wellbeing, infrastructure and governance. Just some of the target environmental themes in the plan include:

- Increased conservation efforts and better management to protect the landscape, animals and plants.
- Reducing waste.
- Improving energy efficiency.
- Reducing carbon emissions.

Target opportunities

The tourism industry relies heavily on the condition of our natural assets. The scenic mountain ranges, native forests, waterways, dams, and rural farmland are the region's greatest asset and highly valued by residents, visitors and businesses. These natural assets are fundamental to the region's prosperity, attractiveness as a place to live and visit, and the wellbeing of its communities. Some of the major tourism drawcards in Scenic Rim include:

- Its climate, weather and clean air.
- Walking trails and camping grounds (including Tamborine Mountain in the east, to Cunningham's Gap in the west).
- The rivers and dams (including Albert River, Logan River, Coomera River and the Bremer River Valleys and three dams, Lake Maroon, Lake Moogerah and Wyaralong Dam).

Without the natural assets that supply these experiences, an \$8 billion reduction in turnover to the SEQ tourism industry could occur between now and 2031.¹

The vision of the Scenic Rim local government aligns well with the aspirations of the NRM Plan and its significance for the region's overall prosperity.

We need your help to protect our natural assets now and into the future

An important part of the NRM Plan review is to collate an updated understanding of the status of natural assets in the area and risks across the region.

This is where you come in. In you haven't already done so, please review the maps on the front page of this flyer, then complete the short online survey we've put together to gather your feedback.

We thank you for your input into this important project for South East Queensland.

Traditional Owner acknowledgement

We acknowledge that the place we now live in has been nurtured by Australia's First Peoples for tens of thousands of years. We believe the spiritual, cultural and physical consciousness gained through this custodianship is vital to maintaining the future of our region.

Funding acknowledgement

This project is supported by Healthy Land and Water, through funding from the Australian Government's National Landcare Program.



Disclaimer

The material contained in this publication is produced for general information only. It is not intended as professional advice on specific applications. It is the responsibility of the user to determine the suitability and appropriateness of the material contained in this publication to specific applications. No person should act or fail to act on the basis of any material contained in this publication without first obtaining specific independent professional advice. Healthy Land and Water and the participants of our network expressly disclaim any and all liability to any person in respect of anything done by any such person in reliance, whether in whole or in part, on this publication. The information contained in this publication does not necessarily represent the views of Healthy Land and Water or the participants of our network.

For further information about Healthy Land and Water, please email info@hlw.org.au or telephone (07) 3177 9100.

¹ Brisbane City Council's Natural Assets Local Law 2003 helps to protect the local environment including bushland areas, wetlands, waterway corridors and significant trees in urban areas. Council has been protecting vegetation and forests with local laws since 1991, providing a balance between protecting the city's environment and people, property and lifestyle.