

1 Planning your site

Plan your site

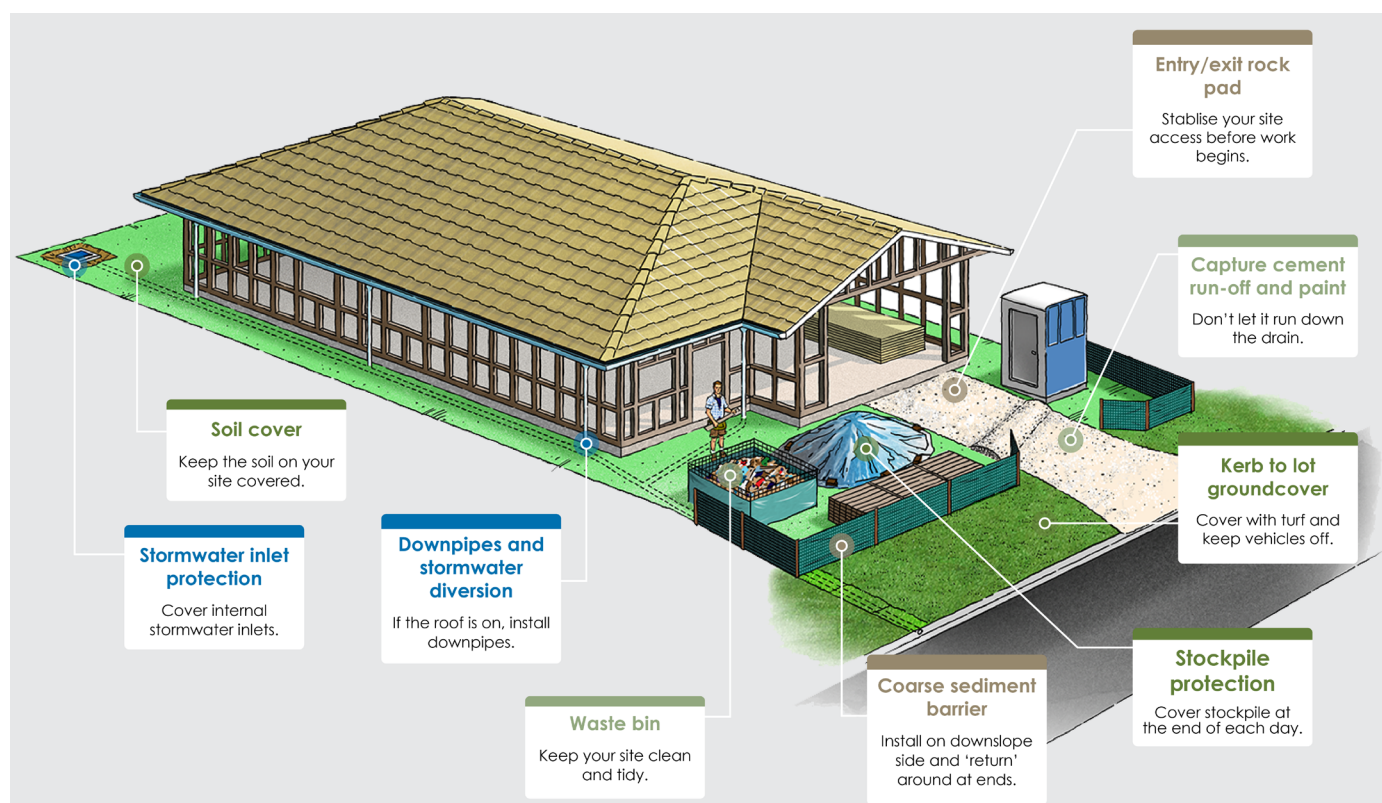
Planning points

- Ensure ESC plans are developed in conjunction with the stormwater and construction plans – this will reduce construction costs and improve outcomes.
- Design the site to match its conditions (soil, topography, and existing vegetation) and avoid unnecessary land clearing.
- Prepare an ESC site plan and display it on site so it is easily accessible.
- Plan your site from job start to job finish (pre-start requirements to client handover).
- Schedule the civil earthworks to avoid wet season, especially in high rainfall areas.
- Get your drainage and ESC measures in early, prior to bulk land clearing.
- Minimise the extent and duration of soil disturbance and allow for quick site re-establishment. Revegetate your site as soon as surrounding construction is complete.

- Check and maintain your ESC measures weekly and prior to rain.
- Prepare a staff ESC training plan for all workers (at induction and annually).
- Ensure ESC equipment is available on site and easily locatable.

An ESC plan should:

- Include areas to be cleared and where soil is to be retained.
- Be prepared by a suitably qualified ESC professional.
- Contain clear, concise information on site set out.
- Display the contact information of the responsible parties (ESC plan preparer and site ESC manager).
- Include maintenance requirements and technical notes.
- Be checked and updated as the site evolves.



Erosion protection
 Sediment control
 Drainage control
 Other pollutant controls

Find out more at waterbydesign.com.au/esc