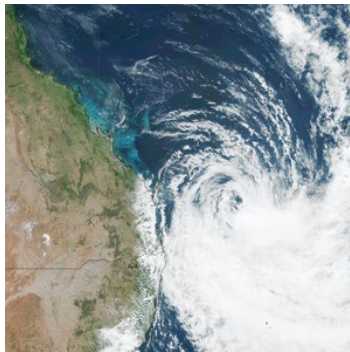


SEQ SUSTAINABLE AGRICULTURE NEWS – MAR 2025



What's been happening?

Ex-Tropical Cyclone Alfred support



Personal Hardship Financial Assistance has been activated for communities across South East Queensland off the back of the impacts of ex-Tropical Cyclone Alfred. Find more information in this link:

<https://www.qld.gov.au/community/disasters-emergencies/disasters/money-finance/eligibility-apply/tc-alfred-march-2025>

Financial assistance available for Primary Industries in South East Queensland

Primary producers affected by Ex-Tropical Cyclone Alfred and flooding in South East Queensland can now apply for financial assistance.

The assistance available includes [Disaster Assistance Loans](#) up to \$250,000, [Essential Working Capital Loans](#) up to \$100,000, and [freight subsidies](#) of up to \$5,000.



Eligible local government areas include the Noosa Shire Council, Sunshine Coast Regional Council, City of Moreton Bay, Brisbane City Council, Redland City Council, Logan City Council, Ipswich City Council, Scenic Rim Regional Council, City of Gold Coast Council, Somerset Regional Council, Lockyer Valley Regional Council, Gympie Regional Council, Southern Downs Regional Council, Toowoomba Regional Council, Bundaberg Regional Council, and the Fraser Coast Regional Council.

For loan applications and eligibility details visit the [Queensland Rural Industry Development Authority \(QRIDA\)](https://www.qrida.qld.gov.au/primary-producers) (<https://www.qrida.qld.gov.au/primary-producers>) or call **1800 623 946**.

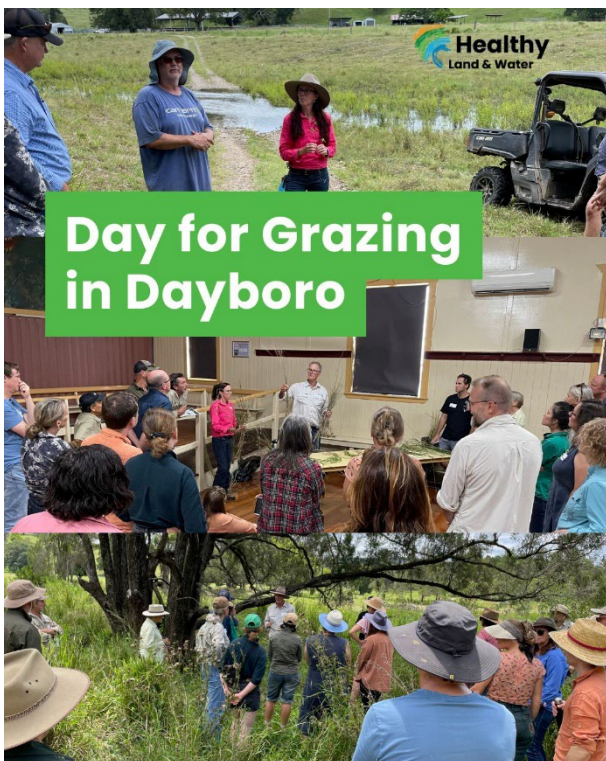
DPI Agriculture Disaster Impact Survey

If you experienced damage or loss to your agriculture business and property from ex-Tropical Cyclone Alfred, we encourage you to fill out the [Queensland DPI Agriculture Disaster Impact Survey](https://survey123.arcgis.com/share/a65512900348401a812e57d743e4c104) (<https://survey123.arcgis.com/share/a65512900348401a812e57d743e4c104>).

This will help decision-makers understand the impacts and activate disaster assistance to support the recovery process.

Healthy Pasture and Grazing Management Workshops - Dayboro and Mapleton

Our recent workshops were a hit! These past workshops highlighted the growing appetite for sustainable land management, and desire for closer collaboration.



Day for Grazing in Dayboro

In Dayboro, **Bruce and Vanessa** led grass ID sessions, while **Pine Rivers Catchment Association** showcased a successful **Seqwater-funded** restoration site.



Healthy Pastures in Mapleton

At Mapleton, **Ecollaboration** guided a revegetation site walkthrough, and Rod Kerr from **Mooloolah River Landcare** shared valuable insights from grazing work up north.

evoke^{AG} conference in Brisbane



Healthy Land & Water's Sustainable Ag team caught up with industry friends new and old at the evoke^{AG} conference in Brisbane recently. Thanks all for meeting us there.

The key themes of the conference this year were:

- Economics and Trade.
- Innovation and Future Technology.
- Sustainability and Environment.
- Workforce and Skills Gap.

We were impressed with the range of Ag-Tech on display this year especially the Beanstalk projects.

Check out [Beanstalk's Drought Venture Studio](#), a program backed by the Future Drought Fund, that is working with entrepreneurial researchers, AgTech founders, and industry disruptors to commercialise drought resilience innovations.

The attendance of our Sustainable Agriculture Facilitators is supported by the Australian Government through funding from the Natural Heritage Trust under the Climate-Smart Agriculture program and the SQNSW Innovation Hub.

FeralScan community mapping and monitoring program



We caught up with the Scenic Rim Regional Council at their Biosecurity Awareness workshop in Harrisville to chat about ways to capture data on feral animal sightings. FeralScan is a great tool that anyone with a smartphone can use that helps landholders, community groups and governments collectively manage priority feral animals.

(www.feralscan.org.au)

The program works across Australia, and its database now contains more than 250,000 records of pest animal sightings, photos and damage reports, making it the single largest community-developed pest database in Australia.

Low on reception? The FeralScan App can be used in remote areas to track pest animals and your management actions offline. Simply bulk upload your logs from the saved tab once you can get online.

New alert notifications are also now helping landholders to notify their neighbours and local biosecurity authorities of significant incidents, ensuring a prompt response to pest animal threats.



Future Drought Fund – Fighting impacts of pasture dieback



Following pasture dieback that wiped out their Creeping Bluegrass pastures, the Rowlings Family in Emu Creek got involved with the Healthy Land & Water Future Drought Fund project and planted perennial legumes that revived their pastures. Hear more about this and other drought resilience measures in this video.

(<https://www.youtube.com/watch?v=WgSaR4NxR8Q>)

New green date calculator tool

Much of Australia's northern grazing regions depend heavily on highly variable wet season rainfall which poses challenges for cattle management.

A new green date (GD) tool was developed to assist producers to calculate the first effective rainfall during the wet season and the corresponding onset of green pasture cover. This allows producers to optimise stocking rates and manage pasture more efficiently and calculate the optimum time for calving.

The green date concept has been used to help determine when a break in the dry season may occur. This new GD tool is based on daily rainfall observations and accounts for El Niño or La Niña years based on over 8000 specified locations, desired 3-day rainfall threshold, and averaging period (e.g. from 1900 or 1950). Register for a new account to try it out.

The GreenDate tool was developed by DHM Environmental Software Engineering for the Northern Australia Climate Program (NACP), University of Southern Queensland (UniSQ) and Meat & Livestock Australia (MLA).

(<https://greendate.dhmsoftware.com.au/>)

Farmers' Perception Survey: Sustainable Agriculture, ESG and Smart Farming

This [Federation University survey](#) supports work to develop a farm-level ESG framework and tool that can be used to quantify the ESG impact on farm. We invite farmers, farm managers, and members of farming groups to share your perspectives on agriculture sustainability and ESG and understand the availability of farm level data.

(<https://bit.ly/ag-ESGsurvey>)

Eradicating fire ants post-floods



Primary producers in the fire ants [suppression area](#) play a critical role in supporting the management of fire ants, especially farms on river flood plains engaged in intensive land use like animal husbandry, horticulture, and agriculture.

The National Fire Ant Eradication Program is especially important with **ex-Tropical Cyclone Alfred causing flooding that has potentially spread dangerous fire ants further afield**. Report and learn to manage fire ants.

(<https://www.fireants.org.au/treat/business/primary-producers>)

Varroa mite detected in South East Queensland



Beekeepers in southern Queensland are urged to regularly check their hives as varroa mite draws closer to the Queensland border. Immediately report unusual signs (deformed bees or dead brood) by **calling 13 25 23**.

The pest that affects honeybees has been detected in a recreational apiary in the Lockyer Valley.

(<https://www.daf.qld.gov.au/news-media/news/varroa-mite-detected-qld>)

Early detection of varroa mite will help us slow the spread across Queensland. Varroa development officers provide free support to recreational and commercial beekeepers and clubs. **Email varroa@daf.qld.gov.au**

To keep up to date with [varroa mite](#) news in Queensland, subscribe to the [bee e-alert](#) (<https://bit.ly/qldgov-eneews-subscribe>).

Japanese encephalitis in Queensland mosquitoes



Japanese encephalitis virus (JEV) has been detected at two piggeries in southern Queensland. There have also been recent detections in New South Wales and Victoria.

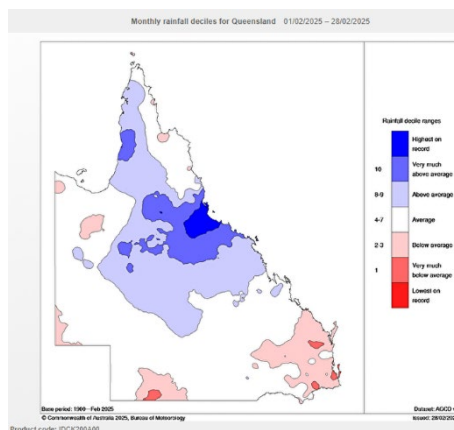
Spread by mosquitoes, JEV is a disease that can cause reproductive issues in pigs and neurological signs in horses, such as lack of coordination, difficulty swallowing and impaired vision. In rare cases, [JEV can cause disease in humans](#).

All pig keepers and horse owners are urged to take preventative action:

- [Control mosquitoes around piggeries:](http://www.farmbiosecurity.com.au/livestock/pigs/controlling-mosquitoes-around-piggeries/)
[\(www.farmbiosecurity.com.au/livestock/pigs/controlling-mosquitoes-around-piggeries/\)](http://www.farmbiosecurity.com.au/livestock/pigs/controlling-mosquitoes-around-piggeries/)
- [Mosquito management for horses:](http://www.farmbiosecurity.com.au/livestock/horses/mosquito-management-for-horses/)
[\(www.farmbiosecurity.com.au/livestock/horses/mosquito-management-for-horses/\)](http://www.farmbiosecurity.com.au/livestock/horses/mosquito-management-for-horses/)

Report any suspected cases to your local veterinarian.

Seasonal Climate Outlook for Queensland



The Queensland Government Drought and Climate Adaptation Program delivers monthly climate updates.

The latest Climate Outlook from BoM indicates there is less than a 40% chance of getting above median rainfall for March to May across most of Queensland. This is a substantial reduction in rainfall probabilities compared to earlier in summer. The outlook for April to June highlights an improvement in rainfall probabilities with a 40% to 60% chance of getting above median rainfall.

Night-time temperatures are also likely to remain warmer than average (70% chance of exceeding median minimum temperatures). Daytime (maximum) temperatures are also likely (greater than 80% chance) of being above median.

You can read the full Climate Note for March here (<https://bit.ly/climatenotemarch25>)



Events

<p>Pasture Dieback Session</p> <p>Location Upper Yarraman Farmers Hall</p> <p>Day, Date Saturday 22 March 9:00 am - 12:00 pm</p>	<p>Join the Department of Primary Industries sown pastures team for an interactive and practical session focused on pasture dieback management. Includes a paddock visit and BBQ lunch.</p> <p>\$15 cash only event</p> <p>Learn about:</p> <ul style="list-style-type: none"> • What is pasture dieback • Identify pasture die back • Identify pasture mealy bugs • Pasture dieback • Management • Identify weeds exposed • From dieback <p>Tea and coffee provided Bookings call / text: Ashlee – 0400665519</p>
<p>Property Management Planning Workshop</p> <p>Location Toogoolawah Golf Club, Annette Street, Toogoolawah QLD 4313</p> <p>Day, Date Wednesday 2 April 2025 Time 9:00 am - 3:00 pm</p>	<p>Come along to this FREE workshop which will provide information, tools and support to help land managers develop individual property management plans and up to date maps for your property.</p> <p>This session will equip you with the best practice knowledge and skills to manage your property, led by experts from Healthy Land & Water, and Queensland's Department of Primary Industries.</p> <p>Topics include:</p> <ul style="list-style-type: none"> • Recognising land types on your property to enable you to identify their limitations on productivity. • Identifying and mapping grazing land types, paddocks and key natural features. • Mapping important property infrastructure such as fence lines, water points and fire tracks. • Soil conservation principles and plans to maximise infiltration and reduce erosion. • Accessing the latest vegetation management information for your property.

	<ul style="list-style-type: none"> • Considering key risks – environmental, climate, biosecurity, production, financial to develop strategies and action plans for your business. <p>Morning tea and lunch are provided. For questions contact Renee Ould renee.o@hlw.org.au or 0455 341 682. <i>This event is being delivered in collaboration with Queensland Department of Primary Industries, through funding from the Queensland Government's Natural Resource Recovery Program.</i></p>
<p>Property Management Planning Workshop</p> <p>Location The Outlook Training and Resource Centre, 4001 Ipswich Boonah Rd, Boonah QLD 4310</p> <p>Day, Date Thursday 3 April 2025</p> <p>Time 9:00 am - 3:00 pm</p>	<p>Come along to this FREE workshop which will provide information, tools and support to help land managers develop individual property management plans and up to date maps for your property.</p> <p>This session will equip you with the best practice knowledge and skills to manage your property, led by experts from Healthy Land & Water, and Queensland's Department of Primary Industries.</p> <p>Topics include:</p> <ul style="list-style-type: none"> • Recognising land types on your property to enable you to identify their limitations on productivity. • Identifying and mapping grazing land types, paddocks and key natural features. • Mapping important property infrastructure such as fence lines, water points and fire tracks. • Soil conservation principles and plans to maximise infiltration and reduce erosion. • Accessing the latest vegetation management information for your property. • Considering key risks – environmental, climate, biosecurity, production, financial to develop strategies and action plans for your business. <p>Morning tea and lunch are provided. For questions contact Renee Ould renee.o@hlw.org.au or 0455 341 682. <i>This event is being delivered in collaboration with Queensland Department of Primary Industries, through funding from the Queensland Government's Natural Resource Recovery Program.</i></p>



Grants & Awards

Community Bee Innovation Fund - closes 25 March 2025

Community Bee Innovation Fund aims to develop creative solutions to strengthen the state's defenses against the destructive pest, varroa mite (*Varroa destructor*) and support Queensland beekeepers.

The half-a-million-dollar Community Bee Innovation Fund (CBIF) will provide grants of between \$5,000 to \$50,000 over the next three years to unearth and support innovative projects to prepare and protect Queensland's beekeeping and pollination-reliant industries. (<https://www.daf.qld.gov.au/business-priorities/biosecurity/plant/community-bee-innovation-fund>)

Apply now for the Advancing Beef Leaders Program - close 30 March 2025

Leaders and future leaders in the beef industry are invited to apply for a unique beef industry-specific leadership and professional development program.

As an Advancing Beef Leaders (ABL) program participant, you will learn from industry leaders, mentors and private sector facilitators virtually and face-to-face. Several ABL past participants have continued their leadership journey through more advanced programs such as Nuffield Australia, participated in beef industry committees, secured positions in AgForce committees, or been elected as local government councillors.

If you're in the beef industry and looking to grow personally and professionally, consider [applying for the ABL program \(https://bit.ly/Advancing-Beef-Leaders\)](https://bit.ly/Advancing-Beef-Leaders)

Climate Smart Agriculture Grant - Capacity Building Round 2 – closes 31 March 2025

This round of capacity building grants will provide up to \$16.58 million over three years from 2025-26 to 2027-28. Grants between \$250,000 and \$3,000,000 will be made available.

The objectives of the Capacity Building Grants round 2 are to support farmers to have better access to knowledge and skills relating to best practice climate-smart sustainable agriculture approaches.

The grant opportunity will fund projects that:

- Increase awareness, knowledge and skills of best practice climate-smart sustainable agriculture approaches.
- Assist community organisations, Landcare groups, First Nations peoples and industry to support farmers and landholders adopt climate-smart and sustainable agriculture practices.
- Provide opportunities, initiatives and information resources to assist the agriculture sector to increase adoption of climate-smart and sustainable agriculture practices at scale.

Grant opportunity guidelines and other supporting documents can be found on the [GrantConnect](https://bit.ly/CSA-round2) website: <https://bit.ly/CSA-round2>

2025 General Jeffery Soil Health Award – nominations close 31 March 2025

Nominations are open for the 2025 General Jeffery Soil Health Award. In an effort to bring soil health to the forefront of critical biodiversity and environmental conservation, Landcare Australia has opened the eligibility criteria to include voluntary environmental groups who protect and improve soil health.

The 2025 General Jeffery Soil Health Award recognises the work of people who care for soil health and who are educating or inspiring others. The \$20,000 award will provide invaluable support to the winner to help extend their work in soil health.

For more information or to nominate: (<https://landcareaustralia.org.au/soilhealthaward/>)

Last chance to participate: QFF's The Energy Southern Queensland (EnergySQ) program

This on-farm energy efficiency program (EnergySQ) will soon conclude, with growers in the Goondiwindi, Lockyer Valley, Scenic Rim, Southern Downs, Toowoomba, and Western Downs regional council areas encouraged to express their interest [here](#).

(<https://hlw.org.au/news/energysq-a-free-energy-efficiency-program-for-farm-managers>)

Watch program participant Savina Lane Wines discuss the benefits of the program

(<https://www.youtube.com/watch?v=vj3QN4U3yyg>).

Please contact us if you would like us to help promote an upcoming event or sustainable agriculture initiative you are involved in. For any other queries or further information please contact the SEQ Sustainable Agriculture team:

- **Bruce Lord** | 0427 013284 | bruce.l@hlw.org.au
- **Vanessa Smolders** | 0432 561 610 | vanessa.s@hlw.org.au
- **Renee Ould** | 0455 341 682 | renee.o@hlw.org.au
- **Lene Knudsen** | 0429 000 179 | lene.k@hlw.org.au

The Sustainable Agriculture Newsletter is supported by the Australian Government through funding from the Natural Heritage Trust under the Climate-Smart Agriculture program and through funding from the Future Drought Fund for the SQNNSW Innovation Hub.