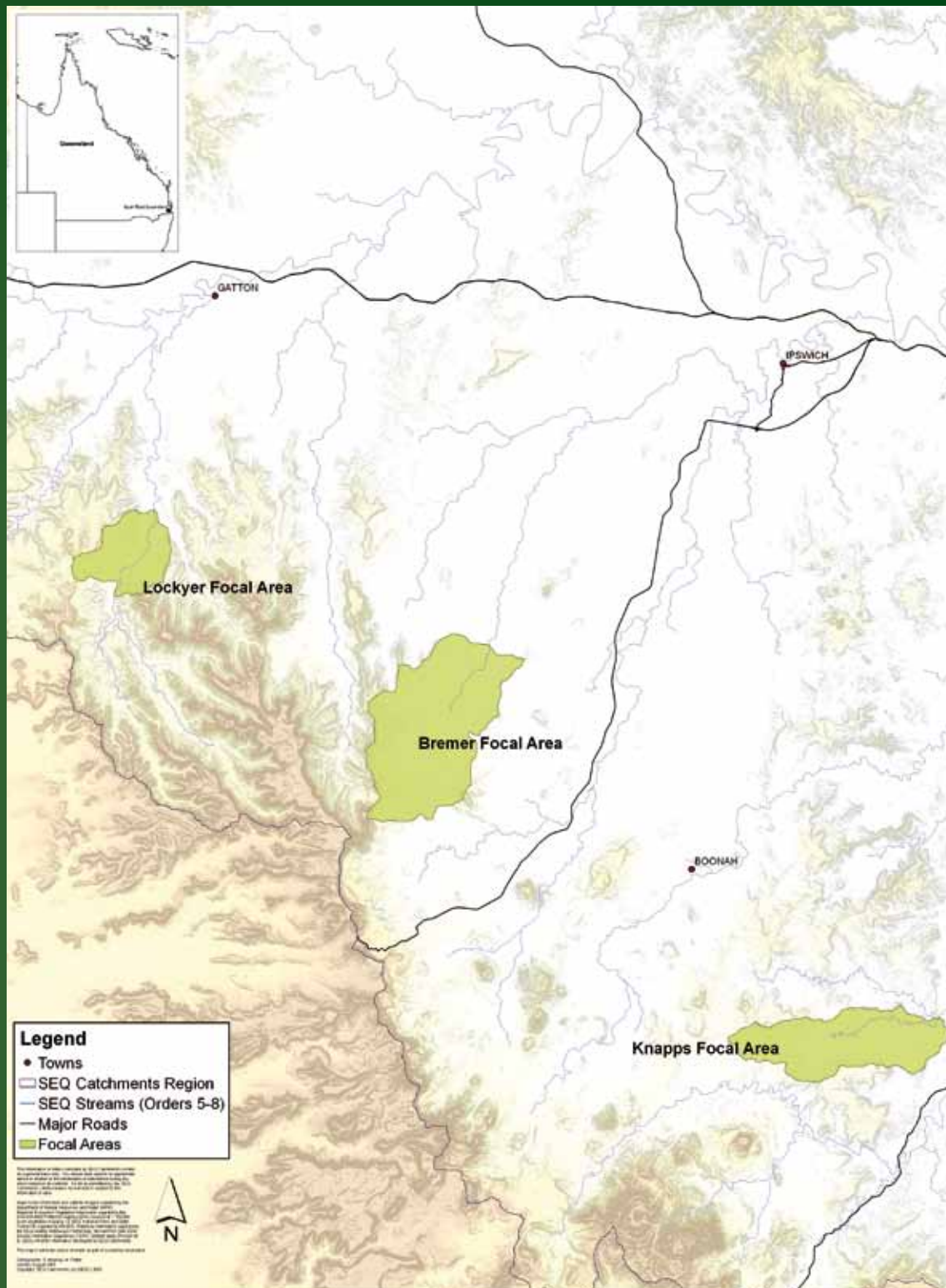


## SEQ Catchments: Leaders in Waterway Restoration



### Waterways Restoration Catchments

The catchments which are the focus of the SEQ Catchments Waterways Restoration Project include Knapp Creek, in the Logan River Catchment, the upper reaches of the Bremer River and Blackfellow Creek. Each of these catchments has been identified as a high source of sediment. The Waterways Restoration Project will improve the health of these catchments by reducing erosion and sediment loading into the waterways.

Healthy Country Focal Areas  
South East Queensland (Topography Highlighted)

1:300,000 printed A3  
GDA 1994 Zone 56  
Data Sources: DERM, DEEDI, SEQHWP, SEQC

