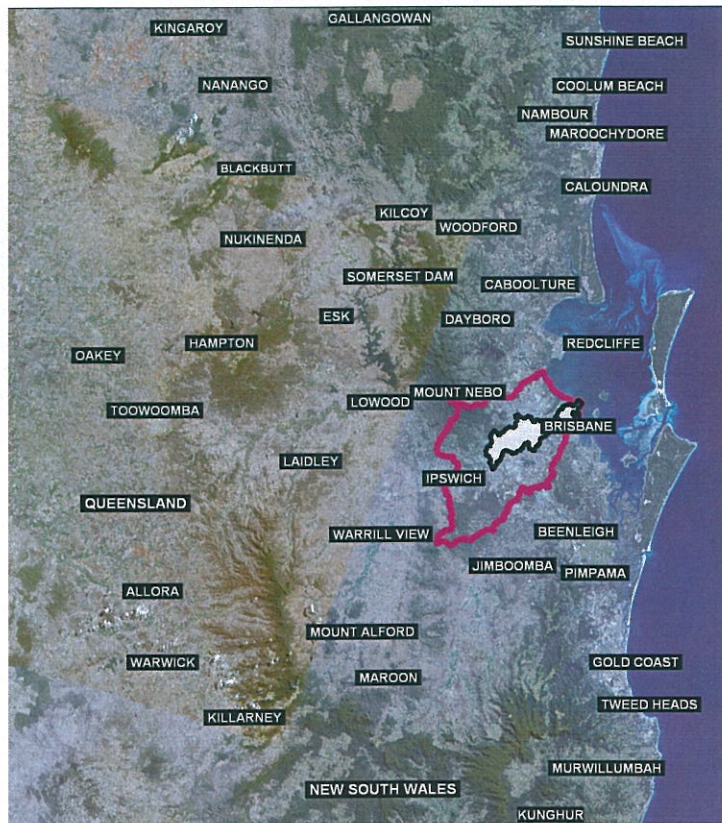


BRISBANE RIVER CATCHMENT



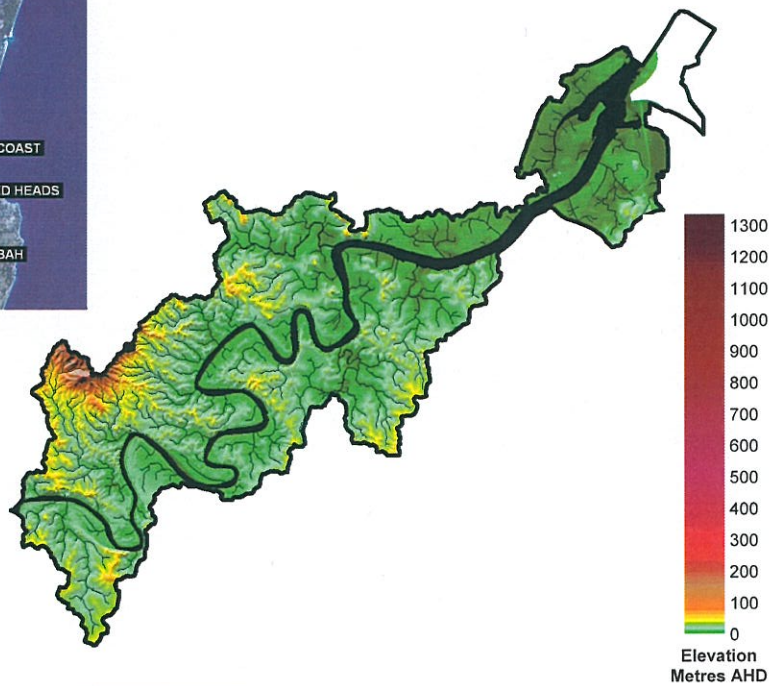
Catchment Locality Map

Stream Data

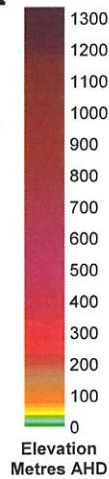
Total Length of Streams = 352 (km)
 Stream Order 1 = 165
 Stream Order 2 = 82
 Stream Order 3 = 38
 Stream Order 4 = 13
 Stream Order 8 = 34

Catchment Data

Area = 173 km²
 Elevation Maximum = 261m
 Elevation Minimum = 0m



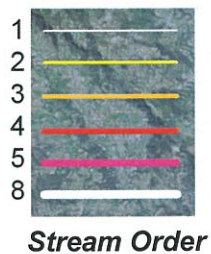
Catchment Elevation



Brisbane River Level 2 Catchment

Brisbane Estuary Level 3 Catchment

Brisbane River Level 3 Catchments

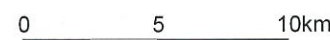


Stream Order

NORTH



Stream Order



Catchment Elevation



Locality Map

Notes –

Streams generated from Digital Elevation Model (DEM) created by WBM from the best available data from Local and State Government departments (2003). Data ranged from photogrammetry and survey data through to 5m DNR&E contours. The DEM does not include bathymetry data.

Where the DEM data is inadequate, stream locations have been manually manipulated from aerial photography and existing stream layers.

Streams were generated using a 0.1km square catchment to define 1st order streams.

Maps were ground truthed in a variety of terrains at various locations throughout South East Queensland to validate the generated network.

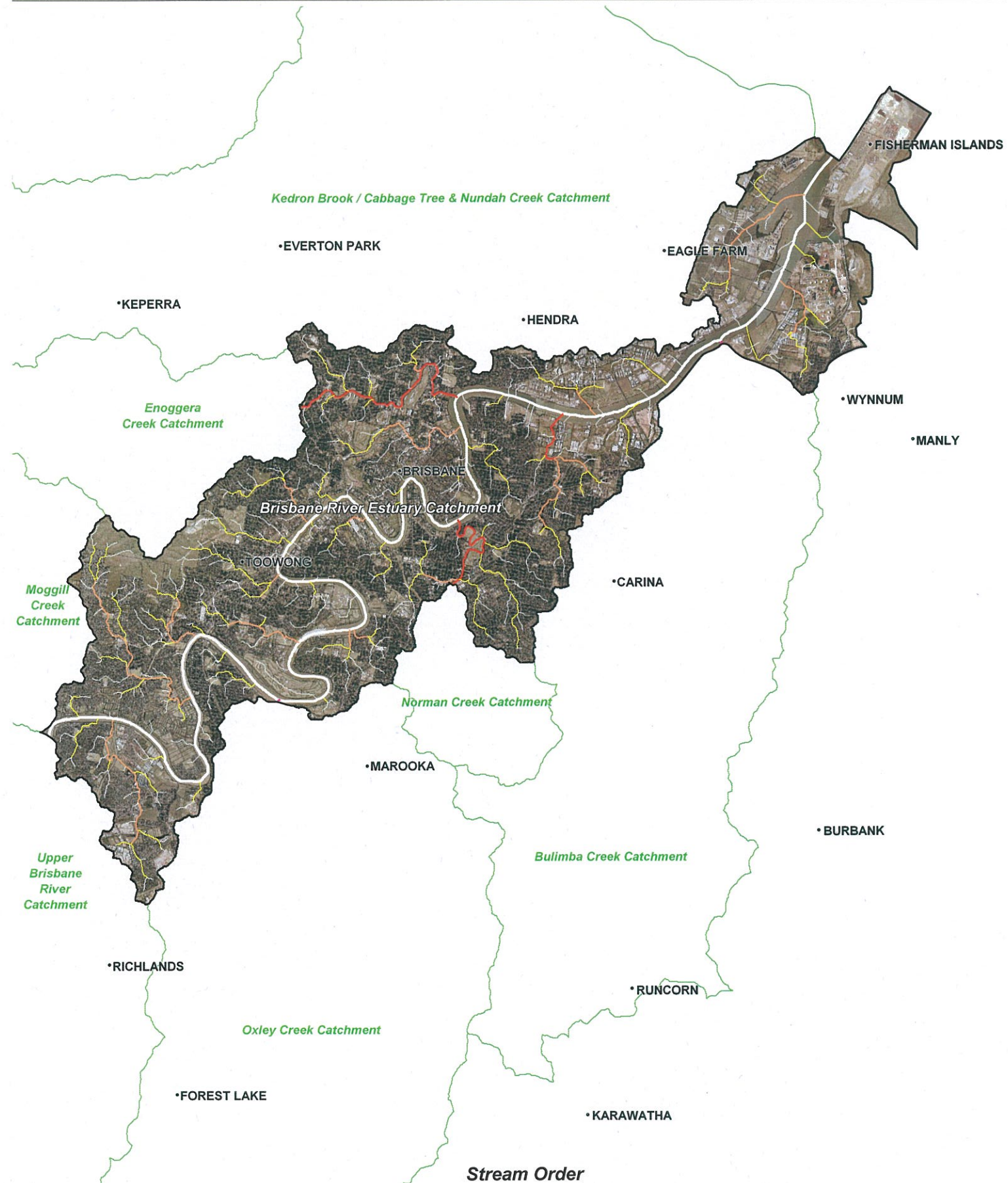
Data Projection - GDA 94, Zone 56

See Appendix A for full Metadata

BRISBANE RIVER CATCHMENT

Level 3 Brisbane Estuary Catchment

Version 1 - August 2005



Stream Order