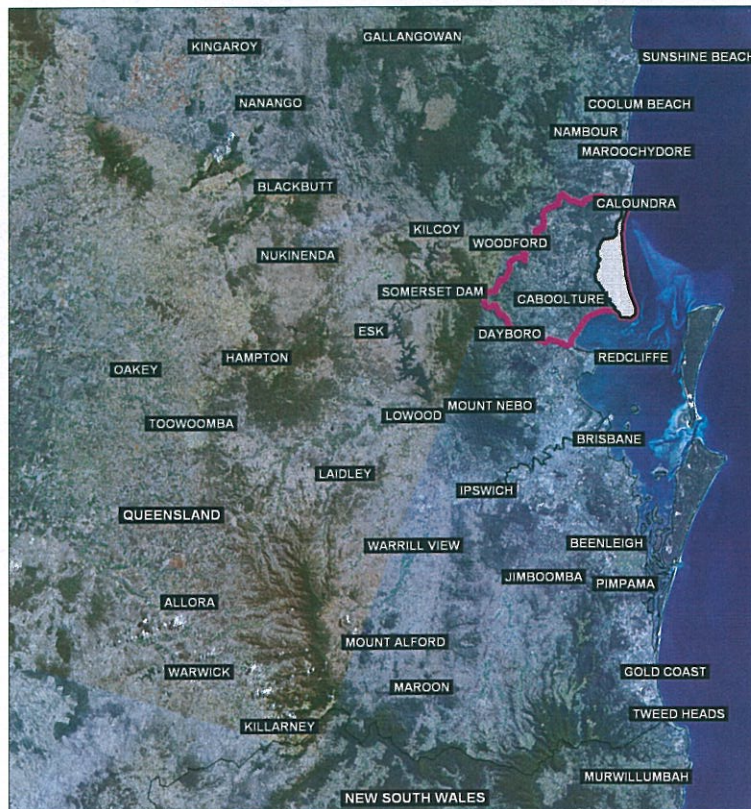


# PUMICESTONE CATCHMENT



Catchment Locality Map



Pumicestone Level 2 Catchment



Bribie Island Level 3 Catchment



Pumicestone Level 3 Catchments

Notes –

Streams generated from Digital Elevation Model (DEM) created by WBM from the best available data from Local and State Government departments (2003). Data ranged from photogrammetry and survey data through to 5m DNRM&E contours. The DEM does not include bathymetry data.

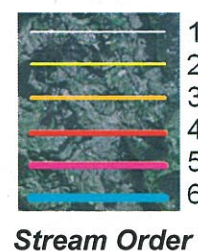
Where the DEM data is inadequate, stream locations have been manually manipulated from aerial photography and existing stream layers.

Streams were generated using a 0.1km square catchment to define 1st order streams.

Maps were ground truthed in a variety of terrains at various locations throughout South East Queensland to validate the generated network.

Data Projection - GDA 94, Zone 56

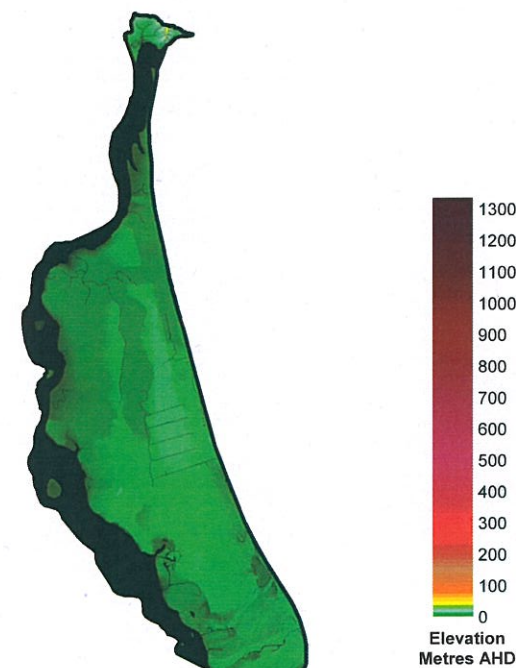
See Appendix A for full Metadata



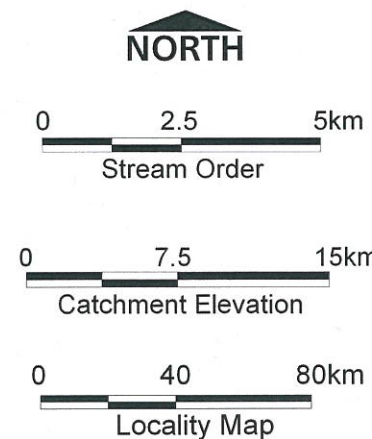
Stream Order

**Stream Data**  
 Total Length of Streams = 142 (km)  
 Stream Order 1 = 58  
 Stream Order 2 = 34  
 Stream Order 3 = 3  
 Stream Order 4 = 7  
 Stream Order 5 = 10  
 Stream Order 6 = 30

**Catchment Data**  
 Area = 193km<sup>2</sup>  
 Elevation Maximum = 47m  
 Elevation Minimum = 0m

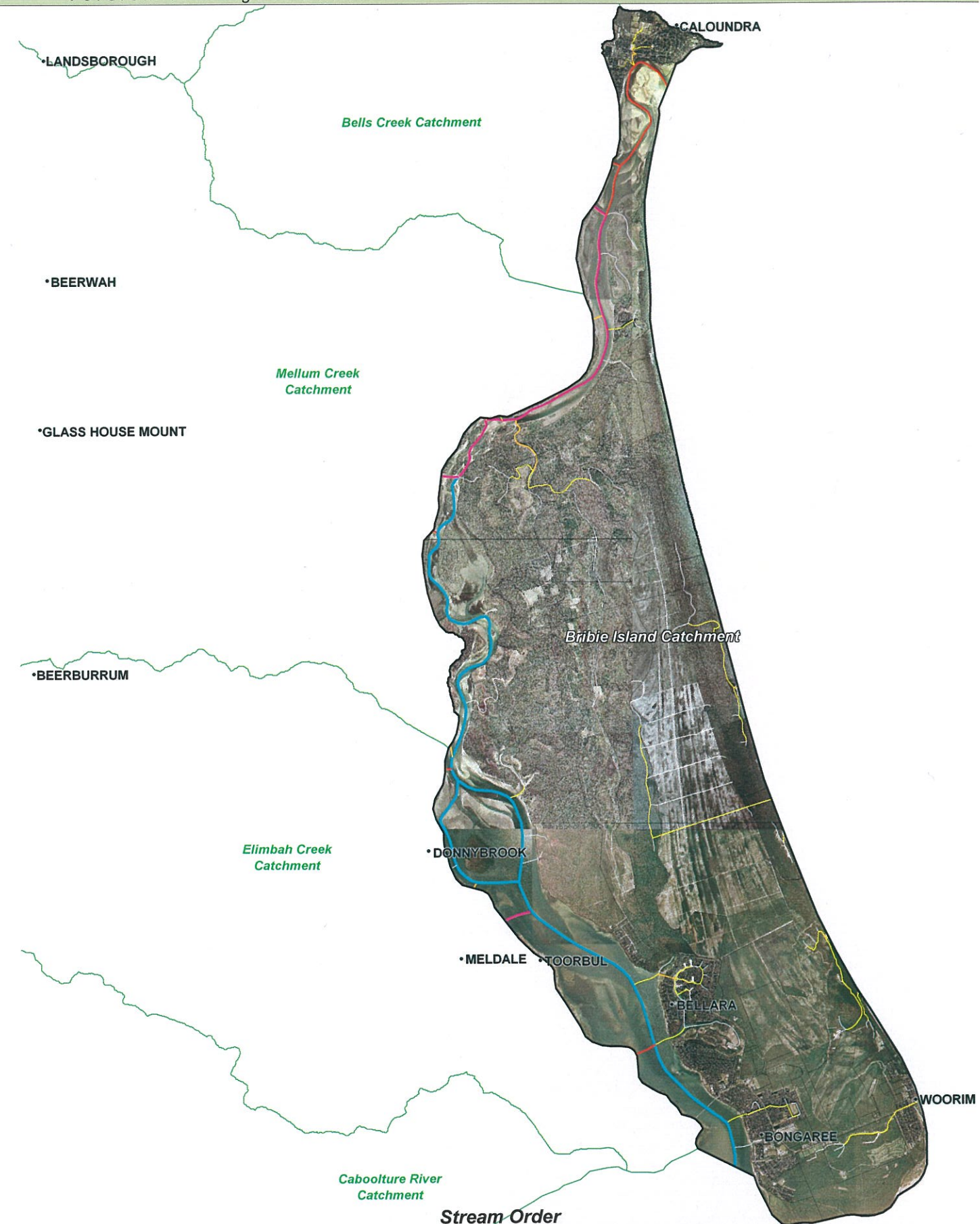


Catchment Elevation



# PUMICESTONE CATCHMENT Level 3 Bribie Island Catchment

Version 1 - August 2005



Stream-Order