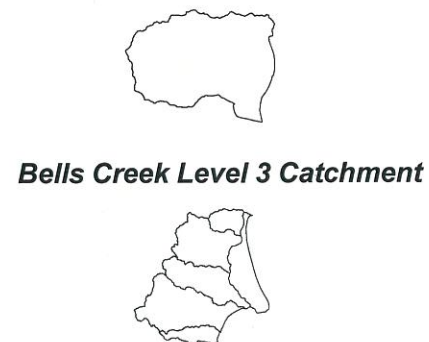


# PUMICESTONE CATCHMENT



Catchment Locality Map



Pumicestone Level 3 Catchments

Notes –

Streams generated from Digital Elevation Model (DEM) created by WBM from the best available data from Local and State Government departments (2003). Data ranged from photogrammetry and survey data through to 5m DNRM&E contours. The DEM does not include bathymetry data.

Where the DEM data is inadequate, stream locations have been manually manipulated from aerial photography and existing stream layers.

Streams were generated using a 0.1km square catchment to define 1st order streams.

Maps were ground truthed in a variety of terrains at various locations throughout South East Queensland to validate the generated network.

Data Projection - GDA 94, Zone 56

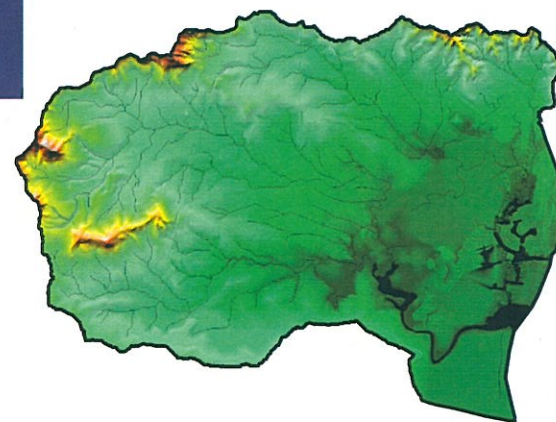
See Appendix A for full Metadata

Stream Data

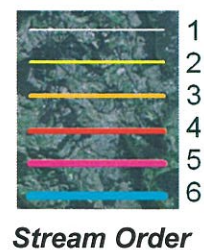
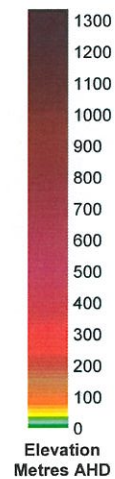
Total Length of Streams = 163 (km)  
 Stream Order 1 = 78  
 Stream Order 2 = 39  
 Stream Order 3 = 20  
 Stream Order 4 = 20  
 Stream Order 5 = 6

Catchment Data

Area = 80km<sup>2</sup>  
 Elevation Maximum = 550m  
 Elevation Minimum = 0m



Catchment Elevation



# PUMICESTONE CATCHMENT

## Level 3 Bells Creek Catchment

Version 1 - August 2005



Mellum Creek Catchment

Bribie Island Catchment

Stream Order