

PINE RIVERS CATCHMENT



Catchment Locality Map



Pine Rivers Level 2 Catchment



Pine Rivers Level 3 Catchments

Notes –

Streams generated from Digital Elevation Model (DEM) created by WBM from the best available data from Local and State Government departments (2003). Data ranged from photogrammetry and survey data through to 5m DNR&E contours. The DEM does not include bathymetry data.

Where the DEM data is inadequate, stream locations have been manually manipulated from aerial photography and existing stream layers.

Streams were generated using a 0.1km square catchment to define 1st order streams.

Maps were ground truthed in a variety of terrains at various locations throughout South East Queensland to validate the generated network.

Data Projection - GDA 94, Zone 56

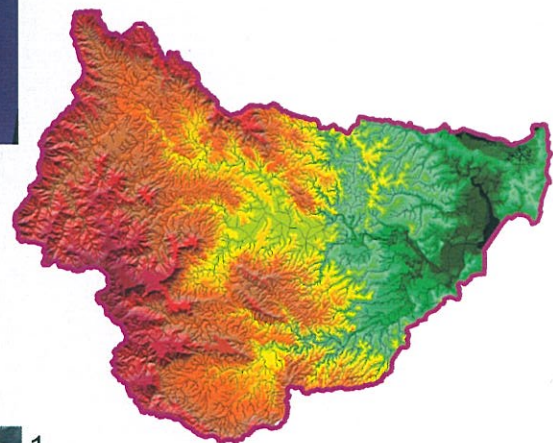
See Appendix A for full Metadata

Stream Data

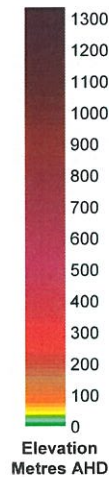
Total Length of Streams = 1770 (km)
 Stream Order 1 = 861
 Stream Order 2 = 415
 Stream Order 3 = 263
 Stream Order 4 = 115
 Stream Order 5 = 54
 Stream Order 6 = 55
 Stream Order 7 = 7

Catchment Data

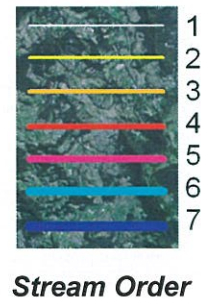
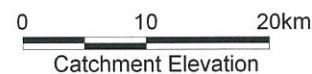
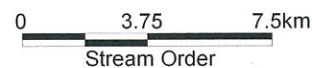
Area = 825km²
 Elevation Maximum = 770m
 Elevation Minimum = 0m



Catchment Elevation



NORTH



Stream Order

PINE RIVERS CATCHMENT

Level 2 Pine Catchment

Version 1 - August 2005



Stream Order