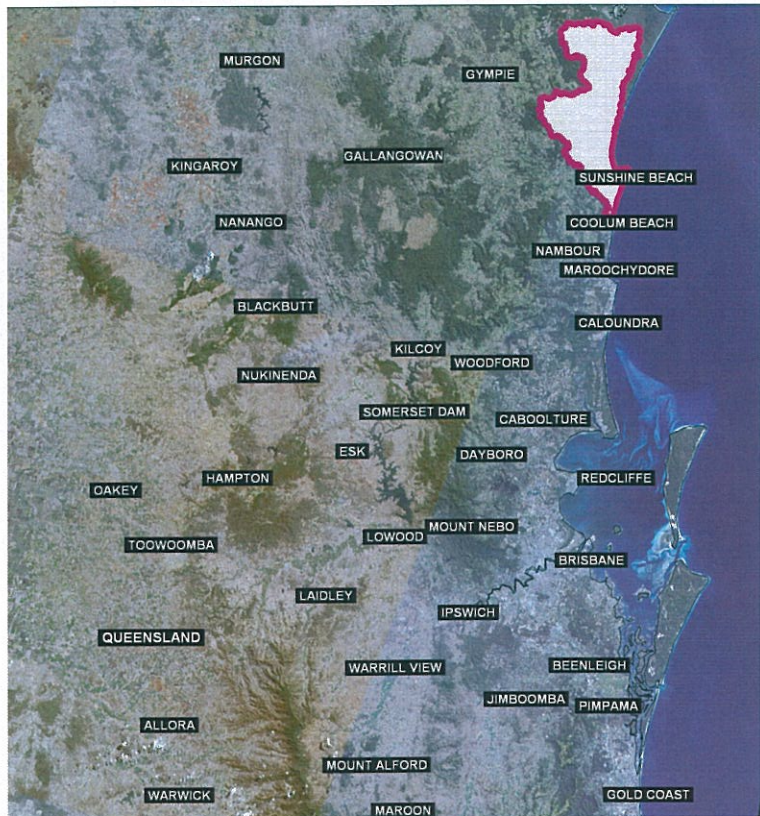


# NOOSA CATCHMENT



Catchment Locality Map



Noosa Level 2 Catchment



Noosa Level 3 Catchments



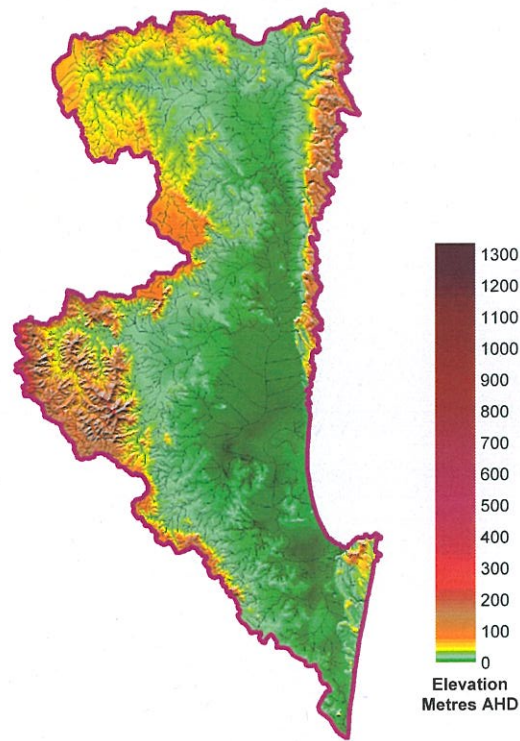
Stream Order

**Stream Data**

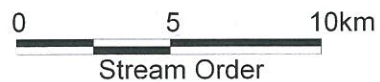
Total Length of Streams = 1519 (km)  
 Stream Order 1 = 673  
 Stream Order 2 = 398  
 Stream Order 3 = 230  
 Stream Order 4 = 103  
 Stream Order 5 = 64  
 Stream Order 6 = 51

**Catchment Data**

Area = 862km<sup>2</sup>  
 Elevation Maximum = 440m  
 Elevation Minimum = 0m



Catchment Elevation

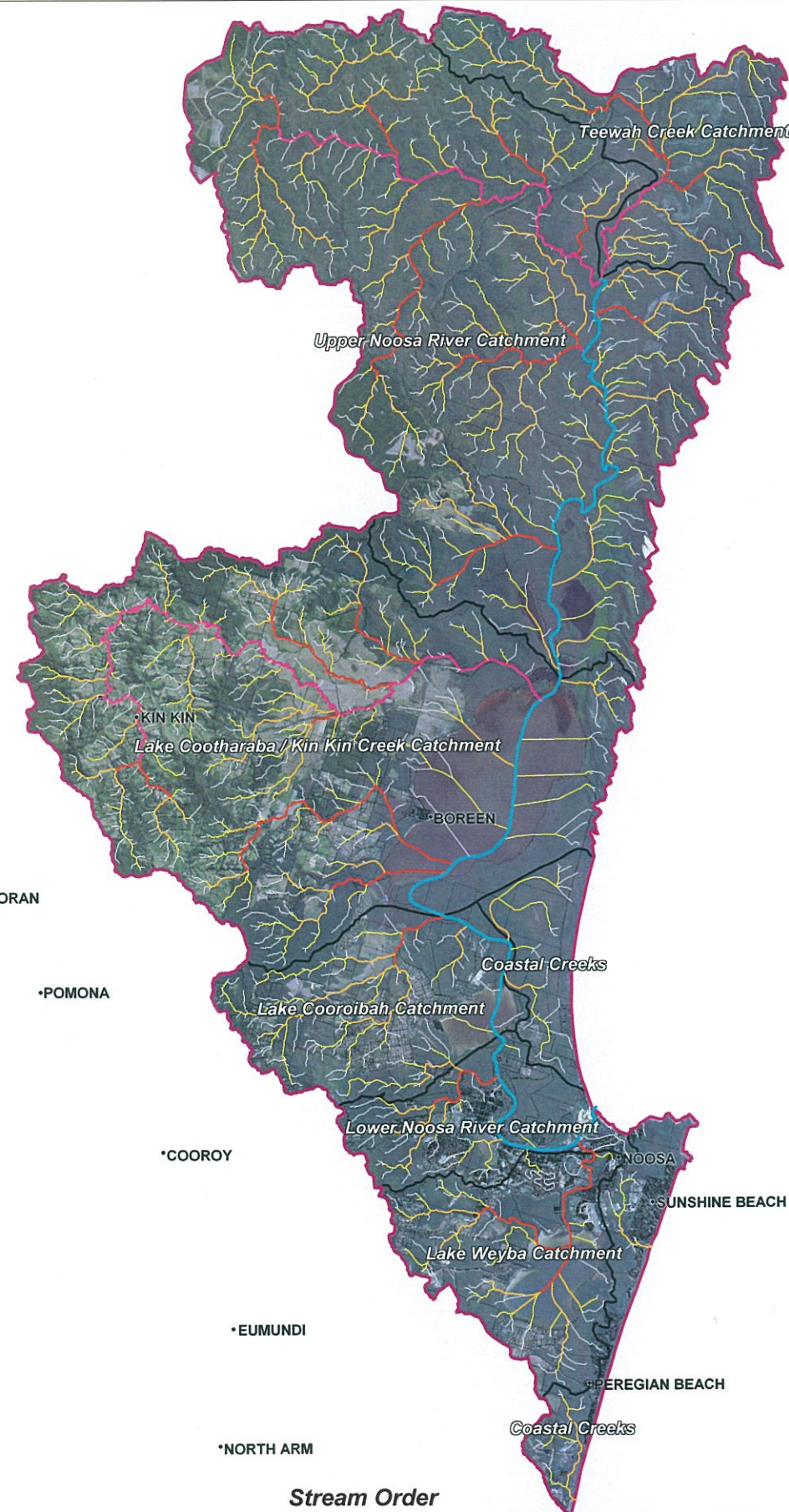


**Notes –**  
 Streams generated from Digital Elevation Model (DEM) created by WBM from the best available data from Local and State Government departments (2003). Data ranged from photogrammetry and survey data through to 5m DNR&E contours. The DEM does not include bathymetry data.  
 Where the DEM data is inadequate, stream locations have been manually manipulated from aerial photography and existing stream layers.  
 Streams were generated using a 0.1km square catchment to define 1st order streams.  
 Maps were ground truthed in a variety of terrains at various locations throughout South East Queensland to validate the generated network.  
 Data Projection - GDA 94, Zone 56  
 See Appendix A for full Metadata

# NOOSA CATCHMENT

## Level 2 Noosa Catchment

Version 1 - August 2005



Stream Order