

MID BRISBANE CATCHMENT



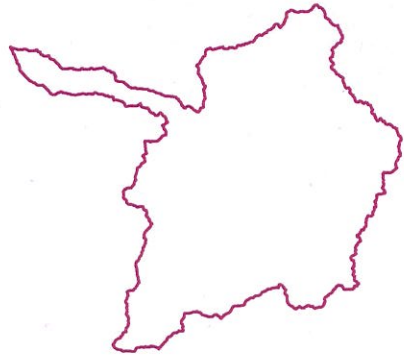
Catchment Locality Map

Stream Data

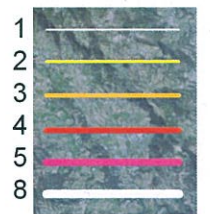
Total Length of Streams = 1073 (km)
 Stream Order 1 = 535
 Stream Order 2 = 283
 Stream Order 3 = 157
 Stream Order 4 = 90
 Stream Order 5 = 8
 Stream Order 8 = 62

Catchment Data

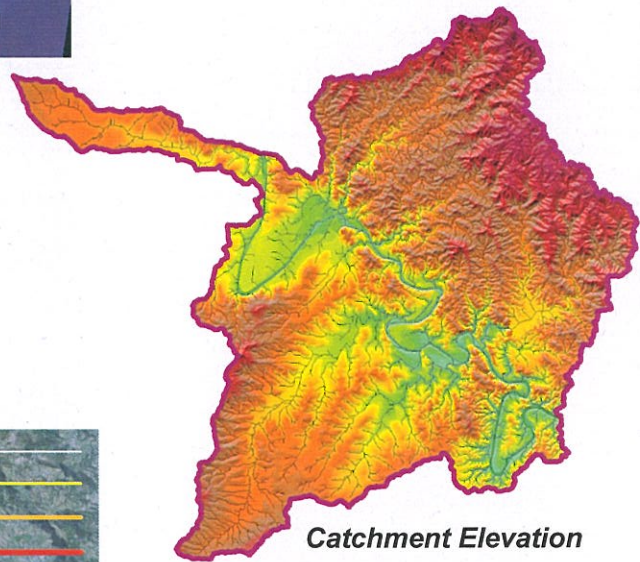
Area = 552km²
 Elevation Maximum = 717m
 Elevation Minimum = 5m



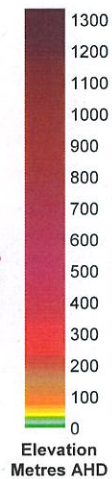
Mid Brisbane Level 2 Catchment



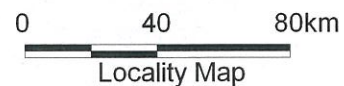
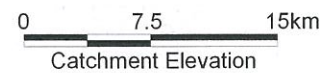
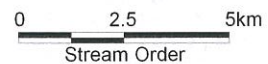
Stream Order



Catchment Elevation



NORTH



Notes –

Streams generated from Digital Elevation Model (DEM) created by WBM from the best available data from Local and State Government departments (2003). Data ranged from photogrammetry and survey data through to 5m DNRM&E contours. The DEM does not include bathymetry data.

Where the DEM data is inadequate, stream locations have been manually manipulated from aerial photography and existing stream layers.

Streams were generated using a 0.1km square catchment to define 1st order streams.

Maps were ground truthed in a variety of terrains at various locations throughout South East Queensland to validate the generated network.

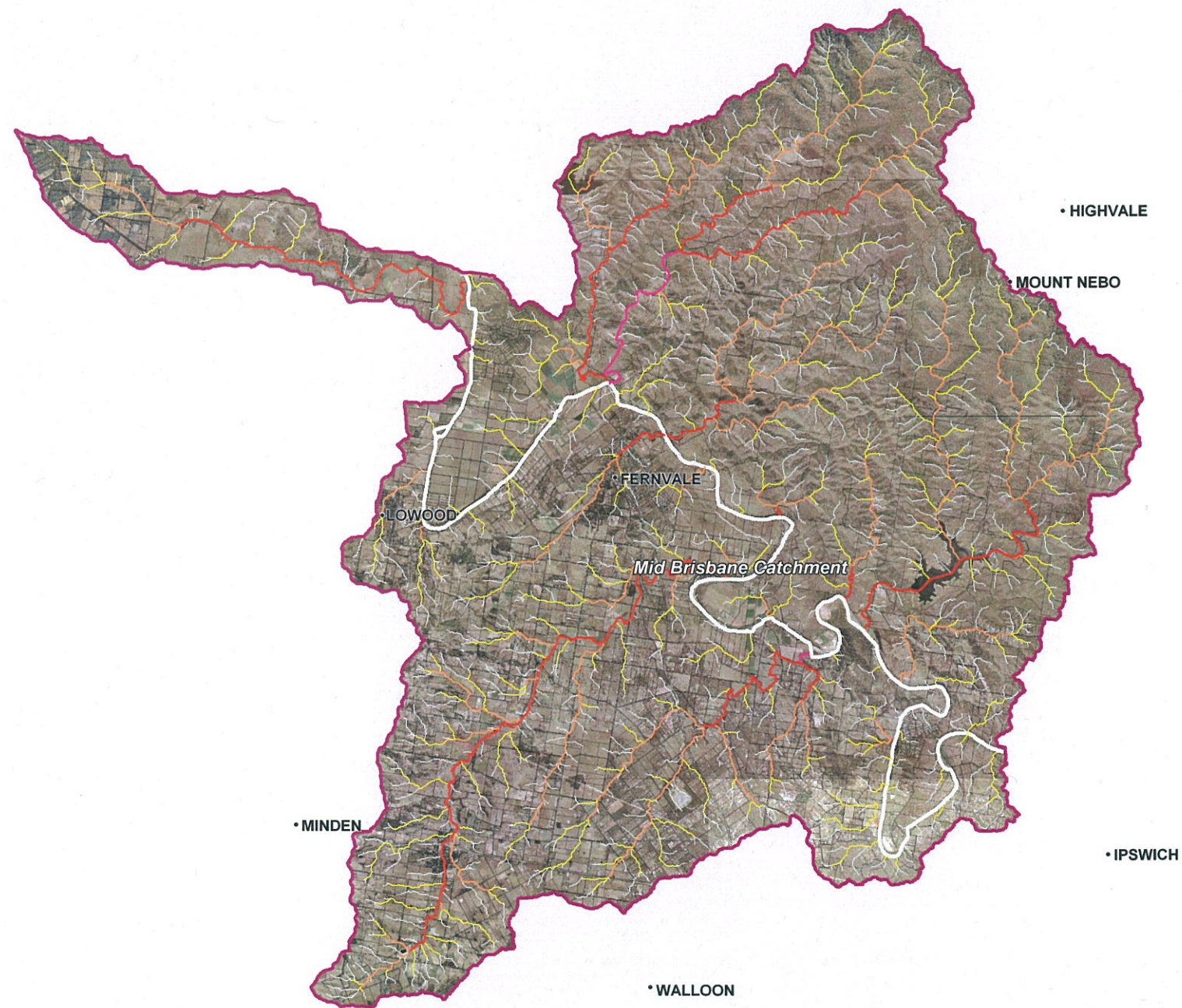
Data Projection - GDA 94, Zone 56

See Appendix A for full Metadata

MID BRISBANE CATCHMENT

Level 2 Mid Brisbane Catchment

Version 1 - August 2005



Stream Order